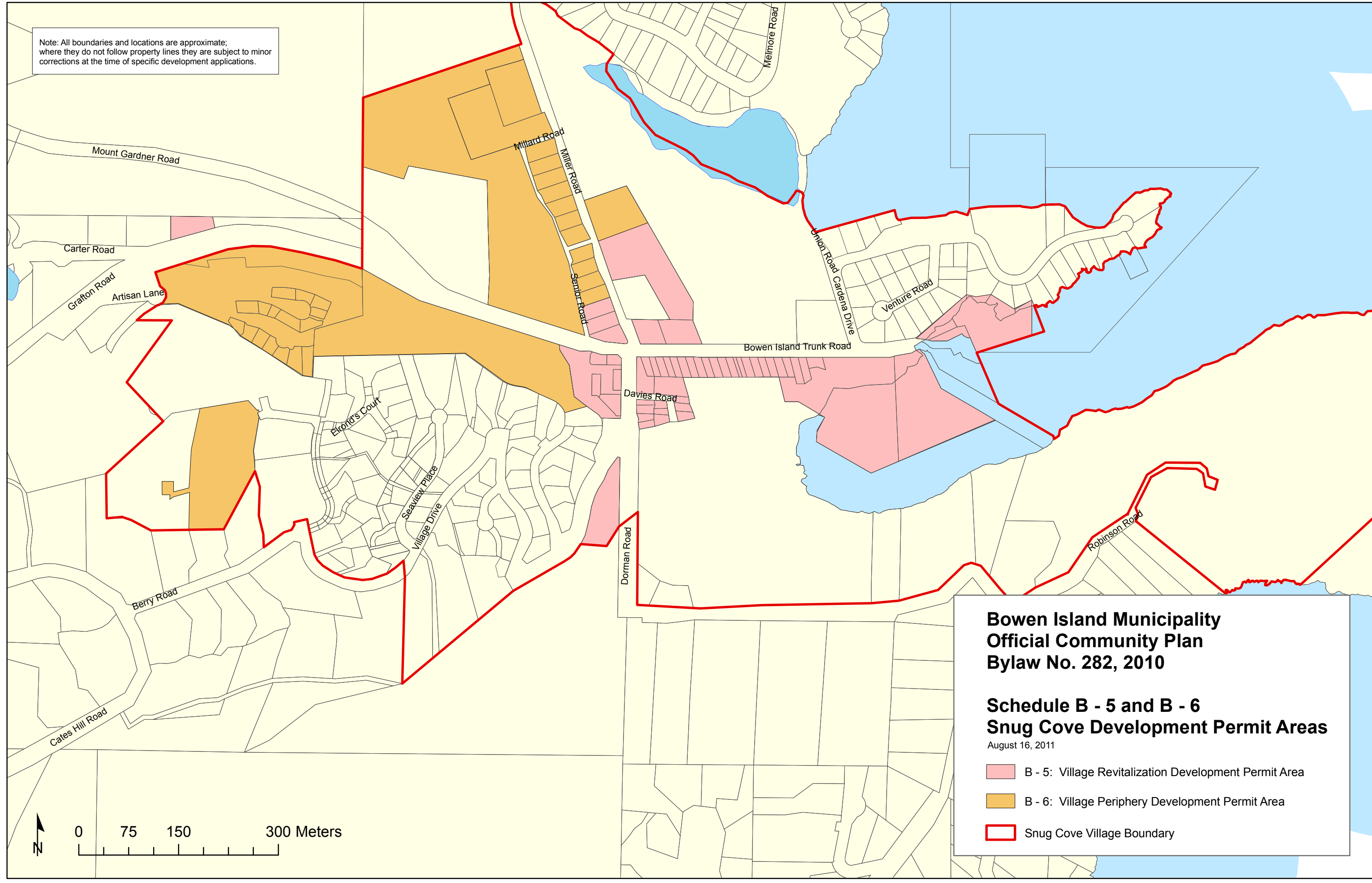





Note: All boundaries and locations are approximate; where they do not follow property lines they are subject to minor corrections at the time of specific development applications.



**Bowen Island Municipality
Official Community Plan
Bylaw No. 282, 2010**

**Schedule B - 5 and B - 6
Snug Cove Development Permit Areas**
August 16, 2011

-  B - 5: Village Revitalization Development Permit Area
-  B - 6: Village Periphery Development Permit Area
-  Snug Cove Village Boundary

