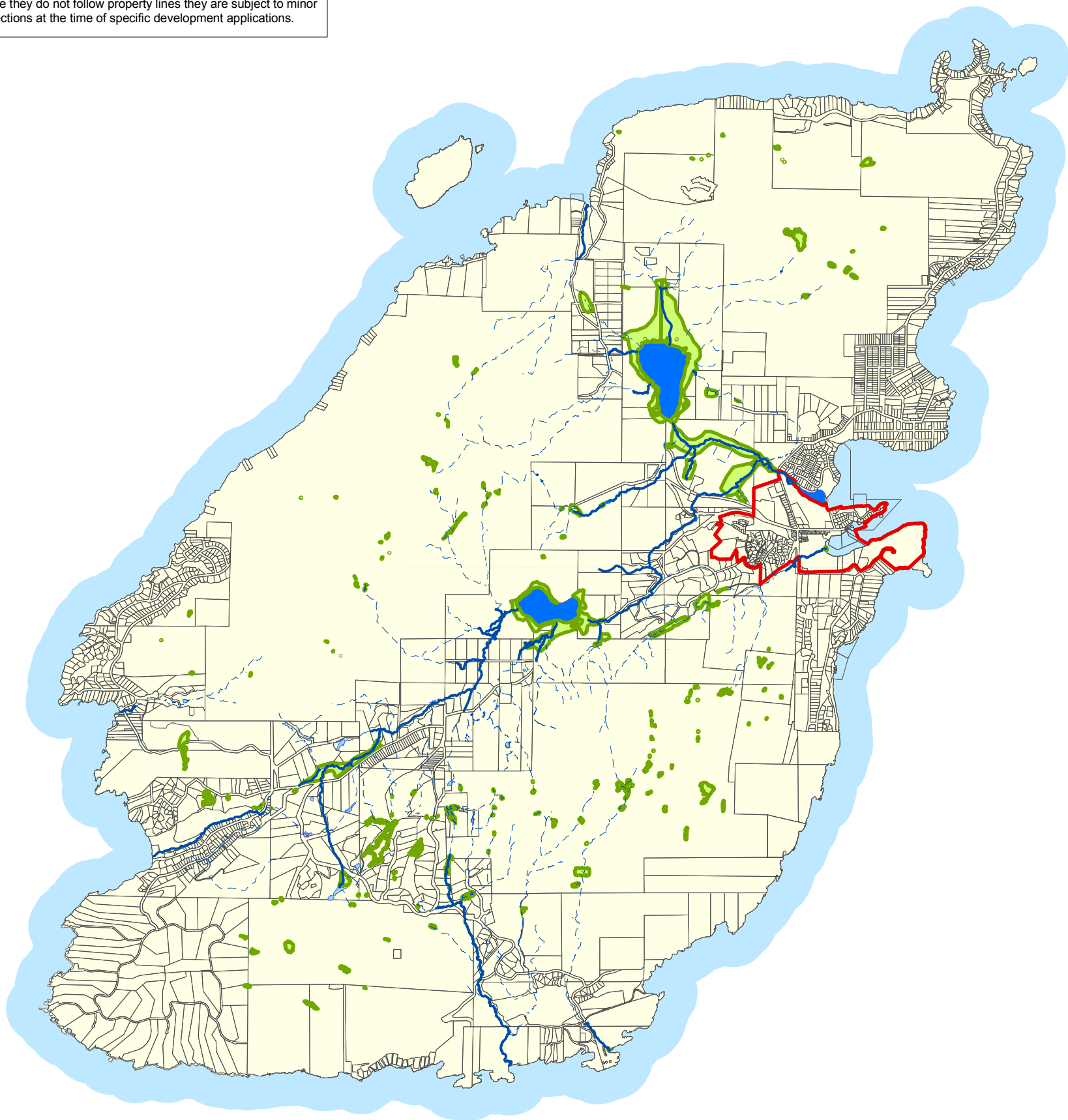
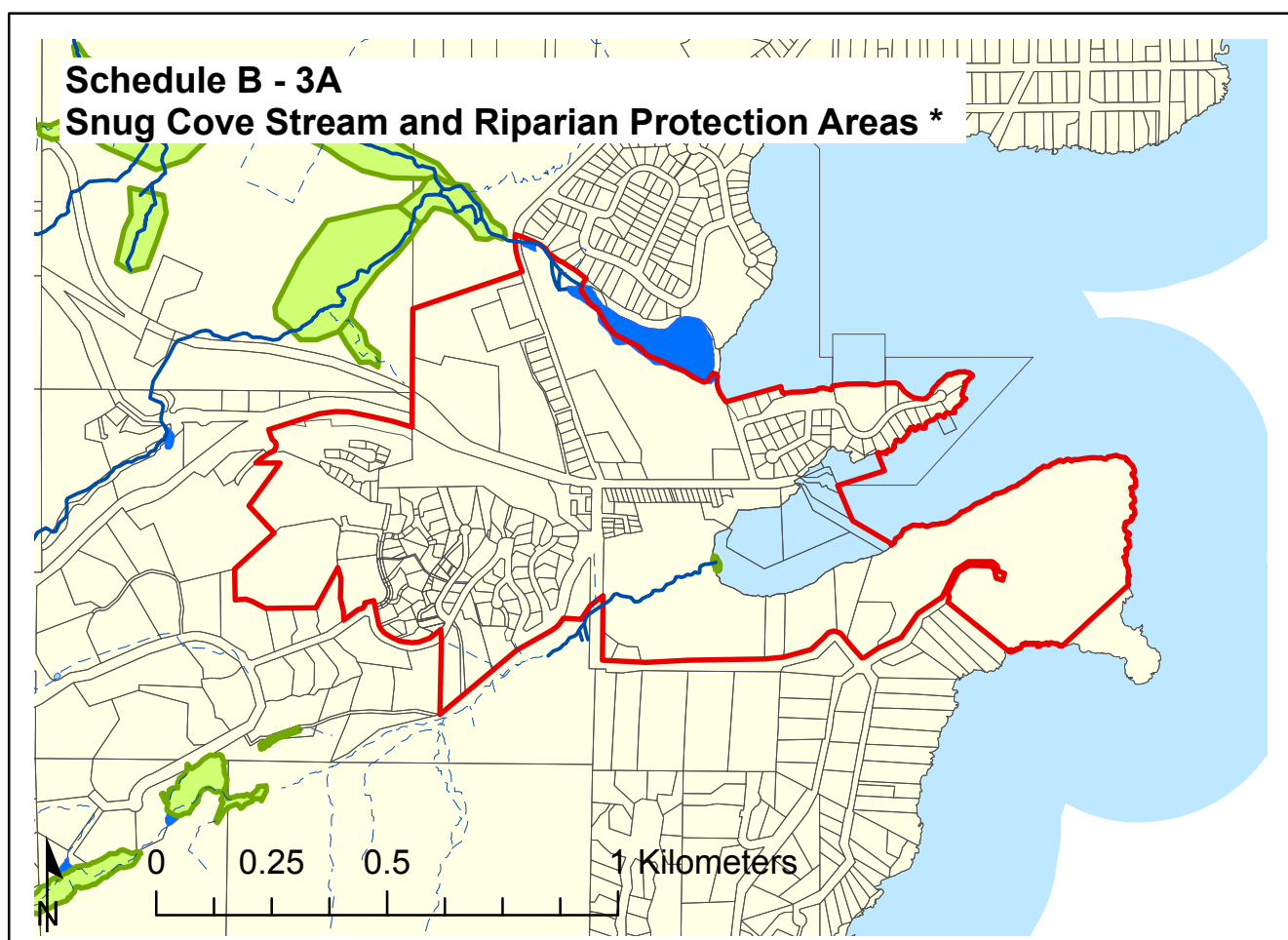


Note: All boundaries and locations are approximate; where they do not follow property lines they are subject to minor corrections at the time of specific development applications.



Data Source: Bowen Island Municipality
Data Date: May 2011



Stream

- Fish Bearing
- - - Tributary to Fish Bearing

Freshwater

- Fish Bearing Lake, Pond
- Tributary to Fish Bearing
- Wetland

□ Snug Cove Village Boundary

**Bowen Island Municipality
Official Community Plan
Bylaw No. 282, 2010**

**Watershed, Aquifer and
Stream Protection
Development Permit Area**

**Schedule B - 3
Fish and Riparian
Protection Areas ***

* The widths of Riparian Areas are not shown, and are determined by site assessment under Riparian Area Regulation (RAR) methods. See "Streamside Protection and Enhancement Areas" as defined in the Glossary of Terms of the OCP text.