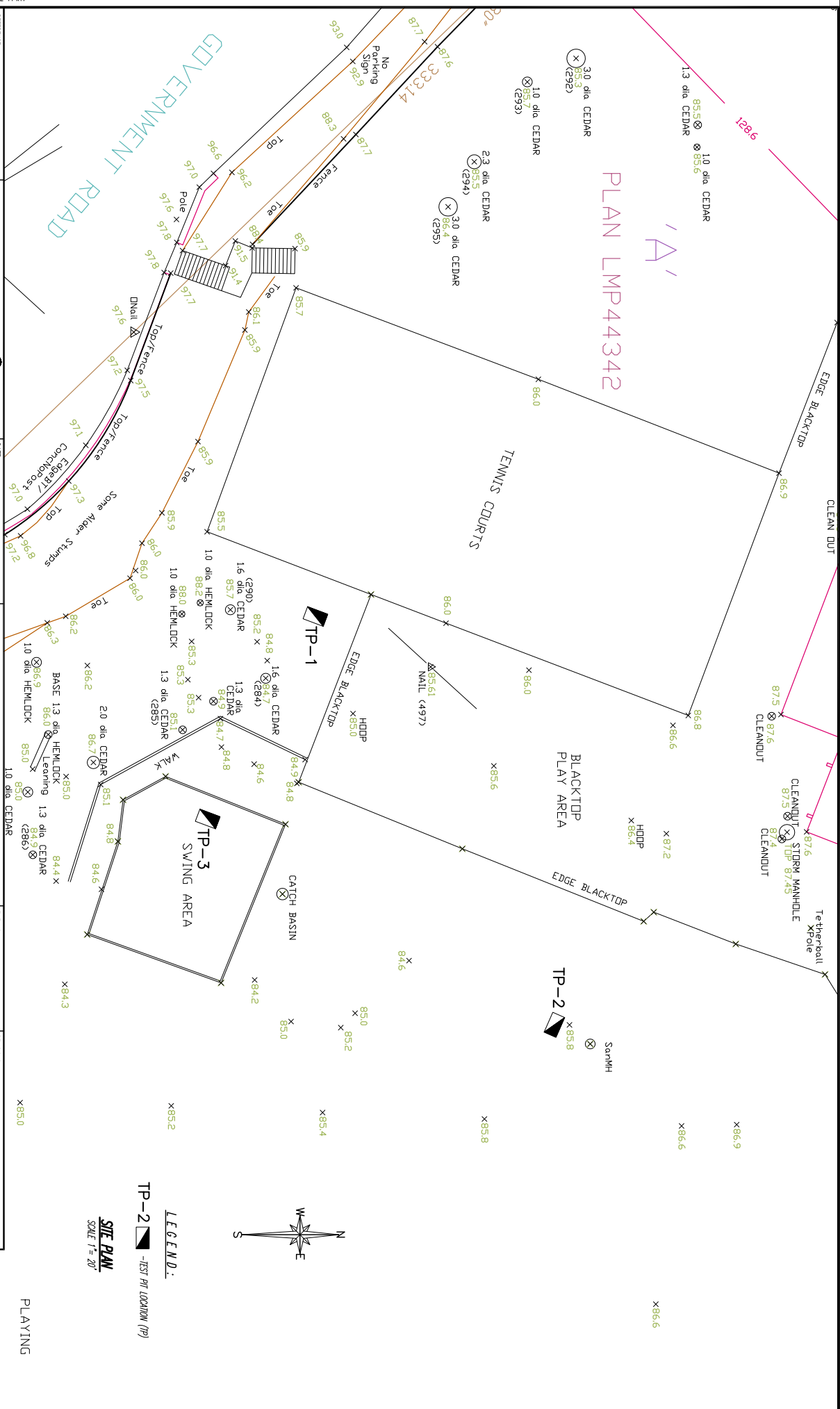


GOVERNMENT ROAD

PLAN LMP44342



LEGEND:
 TP-2 - TEST PIT LOCATION (TP)
SITE PLAN
 SCALE 1" = 20'

REFERENCE:	410-1200 West 72nd Avenue Winnipeg, B.C. Canada R9P 6S5 Tel: (204) 228-2282 Fax: (204) 428-0189		
DATE:	FEBRUARY 7, 2008		
DRN. BR.	M.S.	APPLD.	C./V.H.
SCALE:	AS SHOWN		

BOWEN ISLAND COMMUNITY SCHOOL
 BOWEN ISLAND, B.C.
TEST HOLE LOCATION PLAN

FILE NO.:	7492
DWG. NO.:	G-1

REVISIONS:	
A.	
B.	
C.	

PLAYING